

elektro maribor
LETNO POROČILO 2002 ANNUAL REPORT

Energija za življenje

Energy for live

POROČILO POSLOVODSTVA O POSLOVANJU V LETU 2002	4	5 THE MANAGEMENT BOARD'S REPORT ON OPERATIONS IN 2002
OSEBNA IZKAZNICA	6	6 IDENTITY CARD
ORGANI UPRAVLJANJA DELNIŠKE DRUŽBE	7	7 JOINT-STOCK COMPANY MANAGEMENT BODIES
KRATKA PREDSTAVITEV DRUŽBE	8	9 COMPANY PROFILE
ORGANIZACIJSKA SHEMA PODJETJA	10	10 COMPANY ORGANISATION OUTLINE
LASTNIŠKA STRUKTURA	11	11 OWNERSHIP STRUCTURE
OSKRBA ODJEMALCEV Z ELEKTRIČNO ENERGIJO	12	13 ELECTRICAL ENERGY SUPPLY TO CUSTOMERS
DELOVANJE DISTRIBUCIJSKEGA ELEKTROENERGETSKEGA OMREŽJA Z VIDIKA KAKOVOSTI DOBAVE ELEKTRIČNE ENERGIJE	20	21 DISTRIBUTION NETWORK OPERATIONS WITH REGARD TO THE QUALITY OF ELECTRICAL ENERGY SUPPLY
NOVI DISTRIBUCIJSKI CENTER VODENJA	22	23 NEW DISTRIBUTION CONTROL CENTRE
VLAGANJE V RAZVOJ DISTRIBUCIJSKEGA ELEKTROENERGETSKEGA OMREŽJA	24	25 INVESTMENTS IN THE DEVELOPMENT OF ELECTRICAL ENERGY DISTRIBUTION NETWORK
STORITVENE DEJAVNOSTI	26	27 SERVICES
ELEKTRO MARIBOR d.d. USTANOVIL HČERINSKO PODJETJE	28	29 ELEKTRO MARIBOR d.d. FOUNDED A DAUGHTER COMPANY
ZAPOSLENI	30	31 EMPLOYEES
IZKAZ POSLOVNEGA IZIDA	32	32 INCOME STATEMENT
BILANCA STANJA	33	33 BALANCE SHEET

POROČILO POSLOVODSTVA O POSLOVANJU V LETU 2002

V poslovnem letu 2002 smo v pretežni meri realizirali zastavljene cilje poslovanja v okvirih gospodarskega načrta, razen korekcije cene za tarifne odjemalce.

V primerjavi z načrtovanimi količinami sta se povečala tako nakup kot prodaja električne energije.

Ob 3,6% večjem nakupu smo za upravičene odjemalce prodajo povečali za 7,1 %, za tarifne odjemalce pa za 2,7 %.

Vse dejavnosti, regulirane in neregulirane, so poslovale v mejah načrtovanih poslovnih rezultatov. Le v gospodarski javni službi dobava električne energije tarifnim odjemalcem se je načrtovana izguba zmanjšala za 11 %, kar je v pretežni meri pripomoglo k zmanjšanju načrtovane izgube družbe kot celote za 14 %.

Zanesljivost dobave električne energije odjemalcem se izboljšuje.

Količino neizdobavljene električne energije zaradi izpadov smo od prejšnjega leta zmanjšali za 22 %. Število odjemalcev s slabimi napetostnimi razmerami se prav tako zmanjšuje.

Iz spremljanja sistema kakovosti ugotavljamo, da so odjemalci z oskrbo zadovoljni, nekoliko manj zadovoljni pa so s svojim delom in pogoji dela zaposleni.

V strateških ciljih poslovanja poudarjamo potrebo po večjih vlaganjih v razvoj in revitalizacijo elektrodistribucijskih naprav.

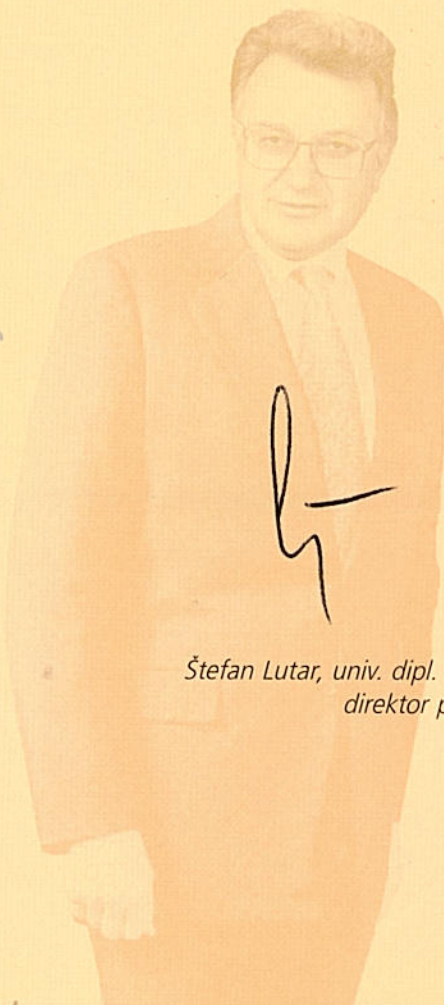
S hitrejšim posodabljanjem in višjim tehničnim standardom naprav bi znatno prispevali k zanesljivosti oskrbe, pa tudi k zmanjšanju stroškov vzdrževanja. To pomeni tudi izboljšanje ekonomičnosti poslovanja.

Kot največjo pridobitev v zadnjih desetih letih lahko štejemo nov distribucijski center vodenja, katerega izgradnja je trajala kar nekaj let. Vrednost centra je več kot 1,5 milijarde tolarjev.

Vodenje sistema iz tega centra bo prispevalo k še zanesljivejši dobavi energije odjemalcem, optimizaciji obratovanja v smislu zmanjševanja tehničnih izgub, boljšemu spremljanju nakupa in prodaje električne energije v smislu čim natančnejšega napovedovanja, s tem pa k zmanjšanju odstopanj in tveganj pri trgovanju z električno energijo.

V letu 2002 se je trg z električno energijo v celoti odprl za upravičene odjemalce, zaenkrat le v Sloveniji, računati pa moramo z odpiranjem navzven in tudi s tujo konkurenco.

Kljub temu, da smo načrtovali najem investicijskih kreditov v višini preko dveh milijard tolarjev, za kar smo imeli tudi soglasje vlade, smo dejansko najeli le 900 milijonov tolarjev investicijskega kredita, s čimer smo v celoti uresnicili načrtovane investicije. Zato ugotavljamo, da je bilo poslovanje v letu 2002 kljub izgubi uspešno.



*Štefan Lutar, univ. dipl. el. inž.,
direktor podjetja*

THE MANAGEMENT BOARD'S REPORT ON OPERATIONS IN 2002

In the business year 2002, the Company reached nearly all goals set in the business plan, except the increase of price for tariff customers.

Both purchase and sale of electrical energy exceeded the planned quantities. The purchase exceeded the plan by 3.6% and the sale by 7.1% and 2.7% to eligible and tariff customers respectively.

All activities, regulated and non-regulated operated pursuant to the plan, except in the public utility service of supplying electrical energy to tariff customers where the loss was 11% lower than planned, which was the main contribution to lower loss than planned by 14% of the Company as a whole.

The reliability of supplying electrical energy to customers is improving. The quantity of electrical energy not supplied due to loss was reduced by 22% compared to the previous year. The number of customers with inadequate voltage quality has also decreased.

From monitoring the quality system it may be established that customers are satisfied with the supply, while the level of employee satisfaction with their work and work conditions is somewhat lower.

The strategic business goals emphasise the need for increased investments aimed at development and revitalisation of electro distribution facilities. By increasing the pace of modernisation and higher technical standards of facilities the reliability of supply would significantly improve and costs would be lower. This means improved economics of the Company's operations.

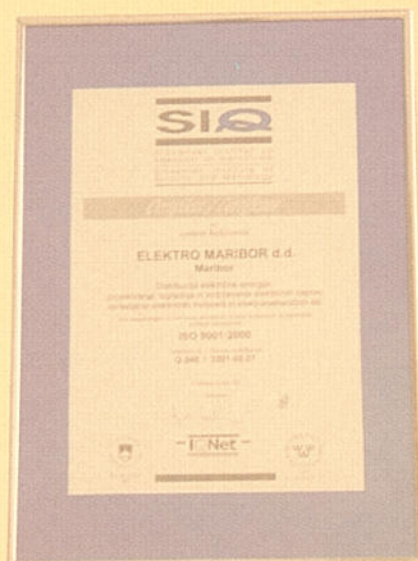
The single largest improvement in the last ten years was the building of the new distribution control centre. The centre took several years to complete and its value exceeds SIT 1.5 billion.

Managing the system from the new control centre means even greater reliability of supplying electrical energy to customers, optimisation of operations due to lower technical loss as well as tracking the purchase and sale of electrical energy in terms of the greatest possible accuracy of projections thus reducing variations and consequently risks in electrical energy trading.

In 2002, the electrical energy market was fully liberalised for eligible customers, for the time being only for trading in Slovenia. However, the opening of the market to foreign competition must be taken into account.

Given the fact that the Company planned to raise more than SIT 2 billion of investment loans for which we had the Government's approval and that the actual amount of raised investment loans was only SIT 900 million, while the investment plan was 100.5% realised, it may be argued that the operations in 2002 were successful despite the loss.

*Štefan Lutar, Univ.B.Sc.E.E.
Director of the Company*



OSEBNA IZKAZNICA

IDENTITY CARD

Družba:
ELEKTRO MARIBOR
javno podjetje
za distribucijo el. energije, d.d.

Skrajšano ime:
ELEKTRO MARIBOR, d.d.

Sedež:
Vetrinjska ulica 2, 2000 Maribor

Matična številka: 5231698

Davčna številka: 46419853

Transakcijski račun: 04515-0000570965

Ustanovitveni kapital: 33.495.324 tisoč SIT

Telefon: (02) 22 00 000

Telefax: (02) 25 22 241, (02) 22 00 108

Število zaposlenih: 909

Preskrbovalno območje:
severovzhodna Slovenija

Velikost preskrbovalnega območja:
3.992 km²

Število prodanih MWh: 1.793.328

Internetna stran:
<http://www.elektro-maribor.si>
Elektronska pošta: info@elektro-maribor.si

Company:
ELEKTRO MARIBOR
Public Enterprise for Distribution
of Electrical Energy d.d.

Short name:
ELEKTRO MARIBOR, d.d.

Registered address:
Vetrinjska ulica 2, 2000 Maribor

Number of Registry: 5231698

Tax number: 46419853

Transaction account: 04515-0000570965

Founding capital: SIT 33,495,324 thousand

Telephone: (02) 22 00 000

Facsimile: (02) 25 22 241, (02) 22 00 108

Number of employees: 909

Supply territory:
north-eastern Slovenia

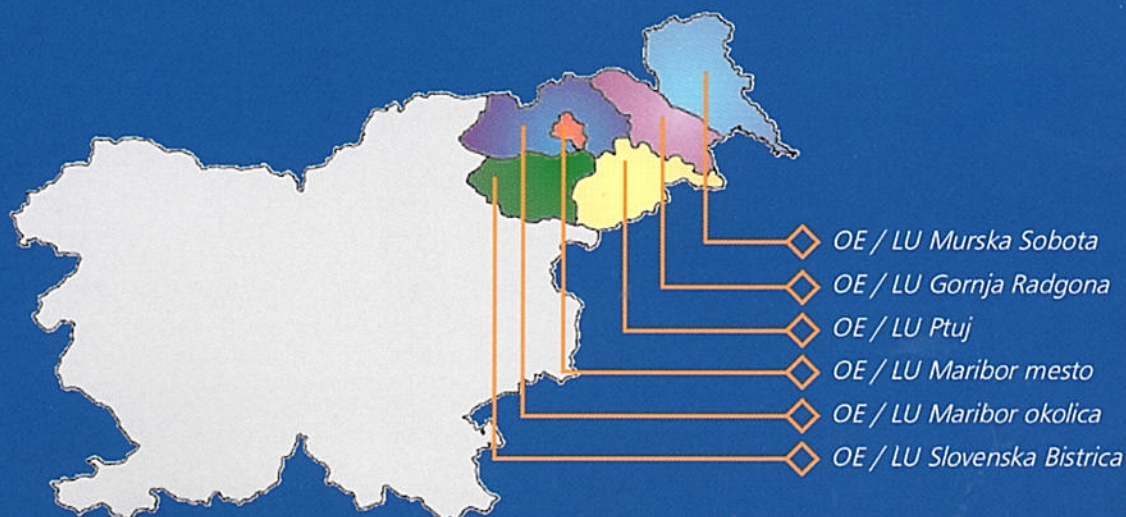
Supply territory size:
3.992 km²

Number of MWh sold: 1.793.328

Website:
<http://www.elektro-maribor.si>
E-mail: info@elektro-maribor.si

6

LETNO POROČILO 2002 ANNUAL REPORT



ORGANI UPRAVLJANJA DELNIŠKE DRUŽBE

JOINT-STOCK COMPANY MANAGEMENT BODIES

Uprava delniške družbe:

Enočlanska uprava delniške družbe -
direktor: Štefan Lutar, univ. dipl. inž.

Nadzorni svet do 5. 8. 2002:

Predstavniki lastnikov:

Vojko Pšenica, univ. dipl. ekon. - predsednik
Bogomir Mesner, gr. inž.

Janez Špes, univ. dipl. ekon.

Anton Balažek, univ. dipl. ekon.

Predstavniki zaposlenih:

Jože Antonič, inž.

Jure Tretjak, ekon.

Nadzorni svet od 14. 8. 2002:

Predstavniki lastnikov:

mag. Zvonko Copot - predsednik

dr. Bojan Škof

Slava Kurtin, univ. dipl. prav.

Jože Dover, univ. dipl. ekon.

Predstavniki zaposlenih:

Franc Šmigoc, univ. dipl. ekon.

Miro Pečovnik, inž.

Skupščina delniške družbe

KOLEGIJ DRUŽBE:

Tehnični direktor:

Stanislav Vojsk, univ. dipl. inž.

Finančni direktor:

mag. Ivan Pristovnik, univ. dipl. ekon.

Splošno kadrovska direktorica:

Jelka Orožim - Kopše, univ. dipl. prav.

Direktor dejavnosti upravljanje

distribucijskega omrežja:

Marjan Zorman, univ. dipl. inž.

Direktor dejavnosti distribucija električne

energije:

Robert Šušek, univ. dipl. ekon.

Direktor dejavnosti dobava električne

energije tarifnim odjemalcem:

Stanislav Toplak, univ. dipl. ekon.

Direktor dejavnosti trženje električne

energije upravičenim odjemalcem:

Bojan Horvat, univ. dipl. inž.

Direktor dejavnosti storitev:

mag. Boris Žitnik, univ. dipl. inž.

Direktor za kakovost:

Tomaž Šišernik, org. dela

Management Board:

Single-member Management Board -

Director: Štefan Lutar, Univ.B.Sc.E.E.

Supervisory Board until 5 August 2002:

Shareholders' representatives:

Vojko Pšenica, Univ.B.Sc.Econ. - Chairman

Bogomir Mesner, B.C.E.

Janez Špes, Univ.B.Sc.Econ.

Anton Balažek, Univ.B.Sc.Econ.

Employees' representatives:

Jože Antonič, Eng.

Jure Tretjak, Econ.

Supervisory Board from 14 August 2002:

Shareholders' representatives:

Zvonko Copot, M.Sc. - Chairman

Dr. Bojan Škof

Slava Kurtin, Univ.B.Sc.LL.

Jože Dover, Univ.B.Sc.Econ.

Employees' representatives:

Franc Šmigoc, Univ.B.Sc.Econ.

Miro Pečovnik, Eng.

Annual General Meeting

BOARD OF DIRECTORS:

Technical Director:

Stanislav Vojsk, Univ.B.Sc.E.E.

Financial Director:

Ivan Pristovnik, M.Sc., Univ.B.Sc.Econ.

Director of Human Resources and General

Affairs Department:

Jelka Orožim - Kopše, Univ.B.Sc.LL.

Director of Distribution Network

Management Department:

Marjan Zorman, Univ.B.Sc.E.E.

Director of Electrical Energy Distribution

Department:

Robert Šušek, Univ.B.Sc.Econ.

Director of Electrical Energy Distribution to

Tariff Customers Department:

Stanislav Toplak, Univ.B.Sc.Econ.

Director of Electrical Energy Marketing to

Eligible Customers Department:

Bojan Horvat, Univ.B.Sc.E.E.

Director of Service Department:

Boris Žitnik, M.Sc. Univ.B.Sc.E.E.

Director of Quality Control:

Tomaž Šišernik, B.Work Org.

KRATKA PREDSTAVITEV DRUŽBE

Javno podjetje za distribucijo električne energije Elektro Maribor, d.d., je del elektroenergetskega sistema Republike Slovenije in eno izmed petih podjetij za distribucijo električne energije v Republiki Sloveniji. Sodi med družbe z dolgoletno tradicijo in bogatimi izkušnjami. Ob koncu leta 2002 je bilo v družbi zaposlenih 909 delavcev.

Lastninsko preoblikovanje družbe se je zaključilo v letu 1998. Tako od 20. 5. 1998 poslujemo kot delniška družba, s polnim imenom Elektro Maribor, javno podjetje za distribucijo električne energije, d.d.

Na podlagi določil Energetskega zakona (Ul. RS št. 79/99-38. člen) in Uredbe o načinu izvajanja gospodarskih javnih služb (GJS) s področja distribucije električne energije (Ul. RS št. 54/2000 - 6. člen) smo v okviru družbe od 1. 1. 2001 organizacijsko in informacijsko ločili naslednje dejavnosti:

- tri gospodarske javne službe (GJS), in sicer:
 - dejavnost upravljanja distribucijskega omrežja
 - dejavnost distribucije električne energije
 - dejavnost dobave električne energije tarifnim odjemalcem
- energetske tržne dejavnosti, kamor sodita:
 - dejavnost trženja električne energije upravičenim odjemalcem
 - proizvodnja električne energije v lastnih malih hidroelektrarnah (MHE)

Od 1. 1. 2001 do 30. 6. 2002 smo to dejavnost opravljali v okviru sektorja storitev.

Dejavnost proizvodnje smo s 1. 7. 2002 organizirali v hčerinski družbi HIDROELEKTRARNE ELEKTRO MARIBOR proizvodnja elektrike d.o.o., (v nadaljevanju HE ELEKTRO MARIBOR, d.o.o.). Družba je bila ustanovljena 2. 4. 2002, ko je bila vpisana v sodni register pri Okrožnem sodišču v Mariboru, z osnovnim kapitalom 9.296.037 SIT.

- neenergetsko tržno dejavnost:
 - dejavnost storitev
- skupne strokovne službe

Dejavnosti opravljamo na različnih lokacijah, in sicer:

- v območnih enotah (OE) distribucije opravljajo svojo poslovno funkcijo sektorji upravljanja, distribucije, dobave električne energije tarifnim odjemalcem in deloma tudi dejavnost storitev:
 - OE Maribor okolica
 - OE Slovenska Bistrica
 - OE Gornja Radgona
 - OE Murska Sobota
 - OE Ptuj
 - OE Maribor mesto
- in storitvenih enotah (SE):
 - SE Elektro Gradnje Maribor
 - SE Elektro Gradnje Ljutomer in
 - SE Elektromont Maribor



COMPANY PROFILE

Public company for electrical energy distribution Elektro Maribor d.d. is a part of the Slovene electrical energy distribution system and one of the five companies for electrical energy distribution in Slovenia. It is a company with long tradition and a lot of experience. At the end of 2002 the Company employed 909 people.

The Company's ownership transformation was concluded in 1998. Thus, since 20 May 1998 the Company has operated as a joint-stock company with full name Elektro Maribor, javno podjetje za distribucijo električne energije d.d. (Public Enterprise for Distribution of Electrical Energy).

As of 1 January 2001 and in line with provisions of Article 38 of the Energy Act (Official Gazette of the RS No. 79/99) and Article 6 of the Decree on the Method for the Implementation of Public Service Obligation in the Field of Electricity Distribution (Official Gazette of the RS No. 54/2000) the following activities within the company were separated for organisational and information purposes:

- three public utility services (PUS) having a status of regulated activities:
 - managing distribution network,
 - electrical energy distribution,
 - supplying electric energy to tariff customers.
- Energy-related market activities, including:
 - electrical energy marketing to eligible customers and
 - electrical energy production in the Company's own small hydro power plants

From 1 January 2001 to 30 June 2002 this activity was a part of the service department.

Production activities have been since 1 July 2002 organised in the daughter company HIDROELEKTRARNE ELEKTRO MARIBOR proizvodnja elektrike d.o.o. (Hydro Power Plants Elektro Maribor, Electrical Energy Production Ltd.) (hereinafter: HE ELEKTRO MARIBOR, d.o.o.). The company was established on 2 April 2002 when it was entered in the Companies Register at the Regional Court of Maribor with equity of SIT 9,296,000.

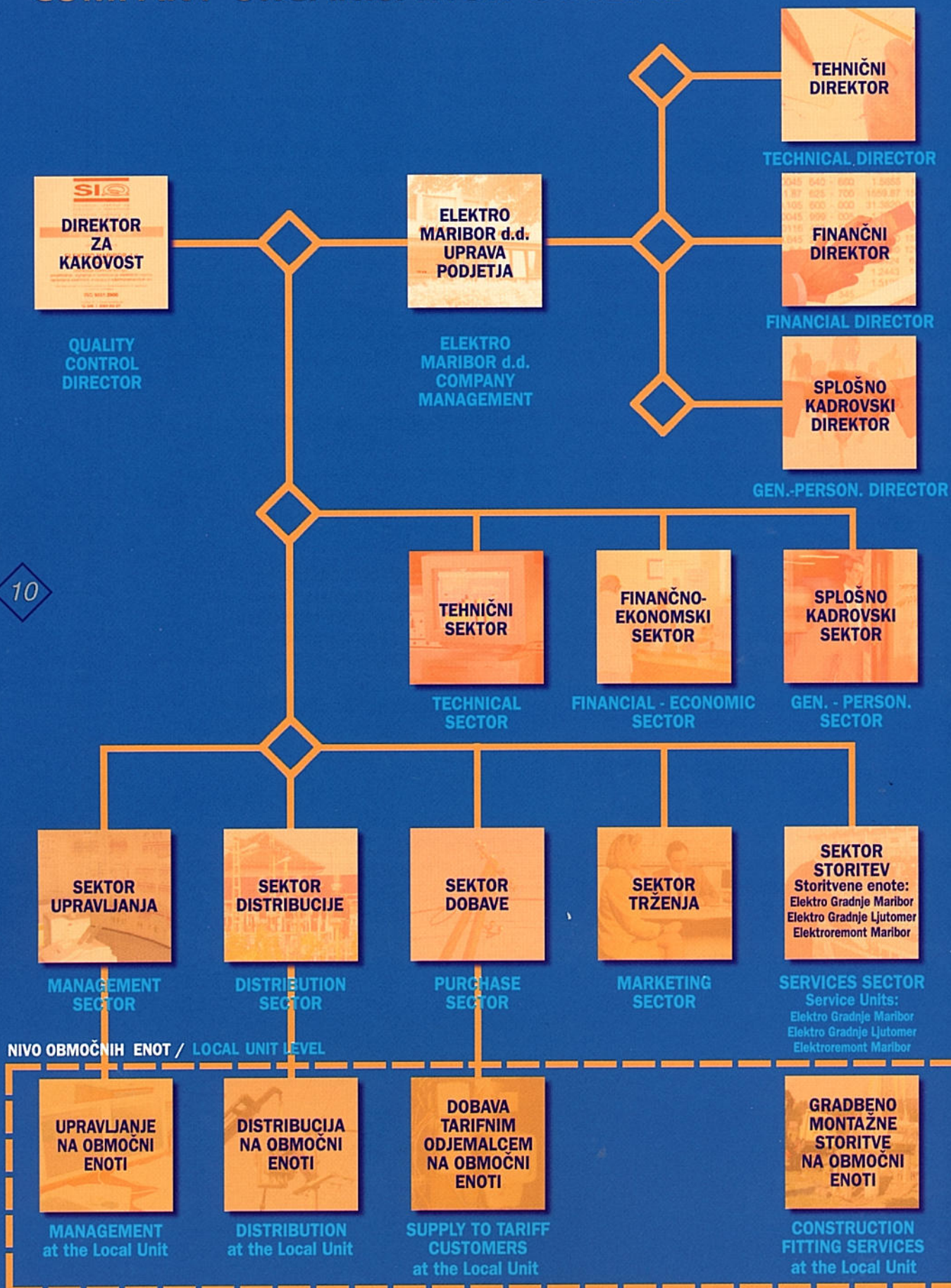
- Non-energy-related market activities:
 - services.
- Joint technical services

Activities are performed at different location, as follows:

- in local distribution units performing the following business functions; management, distribution, supplying electrical energy to eligible customers and partly services:
 - LU Maribor Surroundings
 - LU Slovenska Bistrica
 - LU Gornja Radgona
 - LU Murska Sobota
 - LU Ptuj
 - LU Maribor City
- and service units (SU):
 - SU Elektrogradnje Maribor (Electro Construction Maribor)
 - SU Elektrogradnje Ljutomer (Electro Construction Ljutomer) and
 - SU Elektromont Maribor (Electrical Refitting Maribor)



ORGANIZACIJSKA SHEMA PODJETJA COMPANY ORGANISATION OUTLINE



OBMOČNE ENOTE / LOCAL UNIT: Maribor okolica, Slovenska Bistrica, Gornja Radgona, Murska Sobota, Ptuj, Maribor mesto

LASTNIŠKA STRUKTURA OWNERSHIP STRUCTURE

Lastninsko preoblikovanje družbe se je zaključilo v letu 1998. Družba je bila 20. 5. 1998 vpisana v sodni register pri Okrožnem sodišču v Mariboru kot: Elektro Maribor, javno podjetje za distribucijo električne energije, d.d. Tako sedaj poslujemo kot delniška družba s 1320 delničarji (konec I. 2001 smo imeli 1284 delničarjev).

Lastniška struktura kapitala se je v letu 2002 precej spremenila. Nekaj investicijskih družb (PID-ov) se je umaknilo, kot delničarji pa so se pojavile investicijske družbe in nekaj posameznikov.

Tako je bila lastniška struktura ob koncu leta 2002 naslednja:

The ownership restructuring was completed in 1998. The Company was entered in the Companies Register at the Regional Court of Maribor on 20 May 1998 as Elektro Maribor, javno podjetje za distribucijo električne energije d.d. (Elektro Maribor Public Company for Electrical Energy Distribution d.d.). Today, the company operates as a joint-stock company with 1320 shareholders (1284 shareholders at the end of 2001).

The capital ownership structure changed significantly in 2002. Few investment companies ("PIDs") sold their shares and certain investment funds and individuals became shareholders of the Company.

Thus the ownership structure at the end of 2002 was as follows:

Lastnik	Delež (v %)	Shareholder	Share (in %)
Republika Slovenija	79,50	Republic of Slovenia	79.50
Infond Holding d.d.	3,82	Infond Holding d.d.	3.82
Kapitalska družba in Kapitalska družba PSS	1,80	Kapitalska družba and Kapitalska družba PSS	1.80
Megainvest d.d.	1,30	Megainvest d.d.	1.30
KS Sklad 4 d.d.	1,21	KS Sklad 4 d.d.	1.21
NFD 2 Investicijski sklad	1,15	NFD 2 Investment Fund	1.15
Trdnjava I PID d.d.	1,13	Trdnjava I PID d.d.	1.13
PID VIPA Invest d.d.	1,00	PID VIPA Invest d.d.	1.00
Manjši delničarji skupaj (pod 1% delež)	9,09	Smaller shareholders total (under 1% share)	9.09
Skupaj	100,00	Total	100.00
Število delničarjev	1.320	Number of shareholders	1,320
Knjigovodska vrednost delnice v letu 2002 - v SIT	1.537,61	Share book value in 2002 - in SIT	1,537.61

OSKRBA ODJEMALCEV Z ELEKTRIČNO ENERGIJO

V letu 2002 smo postopoma nadaljevali s prilagajanjem z, v letu 2001, sprejetim Energetskim zakonom. Po tem zakonu smo vse odjemalce električne energije, ki na enem odjemnem mestu presegajo priključno moč 41 kW, razporedili med upravičene odjemalce, odjemalce z manjšo priključno močjo pa med tarifne odjemalce.

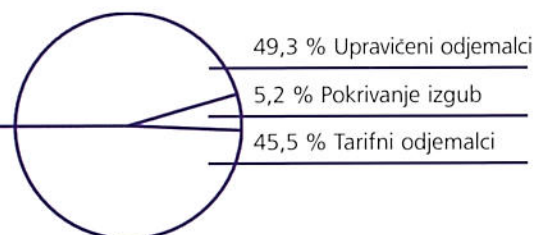
NAKUP ELEKTRIČNE ENERGIJE

Trg z električno energijo je bil v letu 2002 le delno odprt. Ker sta bila uvoz in izvoz omejena le na določene odjemalce in proizvajalce znotraj Slovenije, večina slovenskih proizvajalcev električne energije (hidroelektrarne - Dravske, Savske in Soške, termoelektrarne - Šoštanj, Brestanica in premogovnik Velenje) pa se je povezala v Holding Slovenske elektrarne d.o.o, prave konkurence na strani ponudbe električne energije ni bilo. Pomanjkanje konkurence se je odražalo v relativno visokih nakupnih cenah električne energije, ki niso v celoti izpolnile pričakovanih kupcev.

Skozi vse leto smo glede na potrebe sodelovali na borznih avkcijah prednostnega dispečiranja in na dnevnem trgu. Z nakupom in prodajo električne energije na borzi skušamo nabavo električne energije čim bolj približati pričakovani porabi (minimiranje odstopanj).

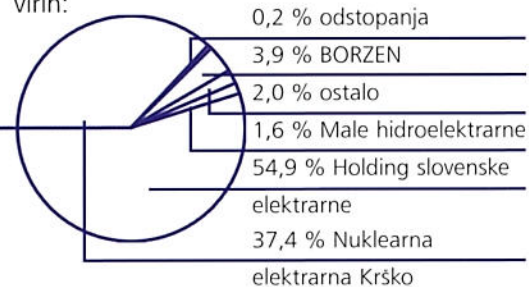
V letu 2002 smo za potrebe odjemalcev Elektro Maribor in za pokrivanje izgub v distribucijskem omrežju nabavili 1.892,4 GWh električne energije. Od tega za tarifne odjemalce 859.861 MWh (46 %), za upravičene odjemalce 933.467 MWh (49 %) in za pokrivanje izgub 99.051 MWh (5 %).

Struktura nakupa električne energije po odjemalcih:



Razliko med pogodbeno zagotovljenimi in dejansko porabljenimi količinami električne energije smo pokrili v okviru odstopanj, kar je na letni ravni predstavljalo 4.710 MWh.

Struktura nakupa električne energije po virih:



S pomočjo načrtovanih aktivnosti smo v letu 2002 uspešno uresničevali v poslovnem načrtu postavljene cilje:

- nabavno ceno smo ohranili na ravni načrtovane
- v prvi polovici leta 2002 smo izgradili lasten informacijski sistem, s pomočjo katerega so bile naše napovedi voznih redov bolj točne in posledično odstopanja manjša
- povečali smo število dobaviteljev električne energije (poleg HSE in NEK-a smo nabavljali električno energijo tudi na borzi, od TET-a in od drugih distribucijskih podjetij) in število tujih dobaviteljev, s katerimi smo sklenili pogodbe o dobavi električne energije za leto 2003
- leta 2002 so zaposleni v službi za nabavo električne energije opravili izpite iz trgovanja na organiziranem trgu z električno energijo
- z udeležbo na raznih seminarjih, tečajih, predavanjih, posvetovanjih, s pomočjo domače in tuje literature, z obiski domačih in tujih podjetij, ki opravljajo sorodno dejavnost, pridobivamo nova znanja s področja trgovanja z električno energijo ter širimo znanje tujih jezikov
- vzpostavili smo sistem za napovedovanje vremensko občutljive porabe
- opredelili smo delovne procese z vidika obvladovanja tveganj

ELECTRICAL ENERGY SUPPLY TO CUSTOMERS

In 2002, the Company gradually continued the adjustment to the Energy Act adopted in 2001. Pursuant to this Act, Elektro Maribor placed all electrical energy customers exceeding connecting power of 41 kW at one offtake point under eligible customers, and customers with lower connecting power under tariff customers.

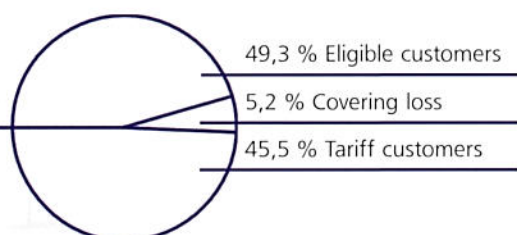
ELECTRICAL ENERGY PURCHASE

The electrical energy market was only partly liberalised in 2002. Due to the fact that import and export was limited only to some Slovene customers and producers and because the majority of Slovene producers of electrical energy (hydro power plants - Drava, Sava and Soča, thermo power plants -Šoštanj and Brestanica and coal mine Velenje) jointly formed Holding Slovenske elektrarne d.o.o. (Slovene Power Plants Holding Company Ltd.) there was no real competition in the supply of electrical energy. Lack of competition was reflected in relatively high purchase prices for electrical energy, which meant that the buyers' expectations were not met in full.

Throughout the year the Company attended the commodity market auction for priority dispatch and was present on the daily market. The aim of buying and selling electrical energy on the commodity market is to align the purchase of electrical energy as close as possible to the anticipated consumption (minimising variations).

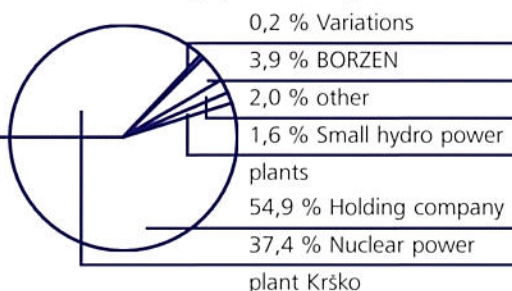
In 2002, Elektro Maribor bought 1,892.4 GWh of electrical energy for supply to customers and covering the loss in the distribution network, of which 859,861 MWh (46%) were bought for tariff customers, 933,467 MWh (49%) for eligible customers and 99,051 MWh (5%) for covering the loss.

Purchase of electrical energy - by type of customers:



The difference between contractually guaranteed and actually consumed quantity of electrical energy was covered within variations, with the annual quantity equalling 4,710 MWh.

Electrical energy purchase by source:



By planned activities in 2002, the Company successfully fulfilled goals set in the business plan:

- Purchase price was maintained at the planned level;
- In the first half of 2002, the Company built its own information system, which improved the accuracy of planning schedules resulting in smaller variations;
- The Company increased the number of suppliers of electrical energy (beside Holding Slovene Power Plants and Nuclear power plant Krško, the Company also purchased electricity energy on the commodity exchange, from Thermo power plant Trbovlje and other distribution companies) and concluded contracts on supplying electrical energy in 2003 with a number of foreign suppliers;
- In 2002, the employees of the Electrical Energy Purchase Department passed the exam on trading on the organised market for electrical energy;
- We were acquiring new knowledge in the field of electrical energy trading and improving the knowledge of foreign languages by attending various seminars, courses, lectures, conferences, by using Slovene and foreign literature and by visiting Slovene and foreign companies engaged in similar activities;
- The company established the system for forecasting weather-sensitive consumption;
- Defining work processes with regard to risk management.

OSKRBA ODJEMALCEV Z ELEKTRIČNO ENERGIJO

PRODAJA ELEKTRIČNE ENERGIJE

Tarifni odjemalci

Oskrba tarifnih odjemalcev je cenovno regulirana s strani Vlade Republike Slovenije, ki določa tarifni sistem in ceno električne energije.

Na območju Elektro Maribor, d.d., smo v letu 2002 imeli 195.985 tarifnih odjemalcev, ki so porabili 859 GWh električne energije, kar predstavlja 48 % celotne količinske prodaje električne energije v Elektro Maribor, d.d., in 23 % celotne prodaje tarifnim odjemalcem na območju Republike Slovenije.

Povprečna prodajna cena za kWh je znašala 18,97 SIT, morala pa bi znašati 20,97 SIT/kWh, da bi v celoti pokrila stroške dostopa do omrežja, nakupa električne energije in stroške delovanja te dejavnosti. Z veljavnostjo od 1. 8. 2002 je Vlada Republike Slovenije izdala Uredbo o določitvi najvišjih tarifnih postavk za prodajo električne energije tarifnim odjemalcem (Ur. l. 67/02). S tem so se tarifne postavke povečale za 2 %.

Vrednostna realizacija prodaje tarifnim odjemalcem:

		REALIZACIJA 2002				
		MWh	SIT	SIT/kWh		
14	PRODAJA	1	Gospodinjski odjem skupaj	649.032,140	12.075.240.495,03	18,605
		2	Ostali odjem 0,4 kV skupaj	179.724,180	3.774.672.564,66	21,003
		3	Javna razsvetljava skupaj	30.256,690	444.588.733,79	14,694
		4	VSE SKUPINE SKUPAJ od tega:	859.013,010	16.294.501.793,48	18,969
		5	- Pristop do omrežja	859.013,010	8.798.172.033,55	10,242
		6	- Energija (4-5)	859.013,010	7.496.329.759,93	8,727
		7	NAKUP skupaj:	859.013,010	8.629.195.190,37	10,045
		8	Razlika (6-7)		-1.132.865.430,44	

Število tarifnih odjemalcev po odjemnih skupinah in povprečna poraba:

	ODJEMNA SKUPINA	ŠTEVILO ODJEMALCEV		indeks	Poraba kWh	Povprečna poraba kWh/odj.
		plan 2002	stanje na dan 31.12.2002			
1	Ostali odjem na 0,4 kV	17.243	17.128	99,33	179.724.180	10.493
2	Javna razsvetljava	1.826	1.850	101,31	30.256.690	16.355
3	Gospodinjski odjem	176.886	177.007	100,07	649.032.140	3.667
4	Tarifni odjemalci skupaj	195.955	195.985	100,02	859.013.010	4.392

ELECTRICAL ENERGY SUPPLY TO CUSTOMERS

ELECTRICAL ENERGY SALE

Tariff Customers

The Government of the Republic of Slovenia regulates the prices for supply of tariff customers. The Government sets the tariff system and the price of electrical energy.

In Elektro Maribor d.d. area there were 195,985 tariff customers in 2002. They consumed 859 GWh of electrical energy, which is 48% of the total electrical energy sold by Elektro Maribor d.d. and 23% of the total electrical energy sold to tariff customers in Slovenia.

The average sale price was SIT 18.97 per kWh. The price should be SIT 20.97 in order to fully cover the cost of access to the network, purchase of electrical energy and operational costs. The Government of the Republic of Slovenia issued the Decree Laying Down Maximum Electrical Energy Sale Tariff Items (Official Gazette of the RS No. 67/02) effective from 1 August 2002. Pursuant to the Decree, the tariff items increased by 2%.

Realised sales to tariff customers:

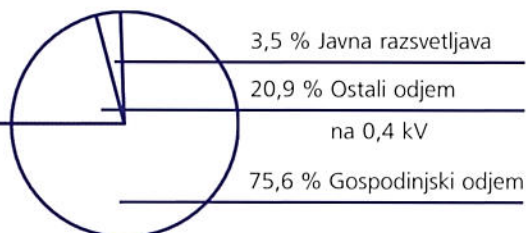
			REALISED IN 2002		
			MWh	SIT	SIT/kWh
SALES	①	Household offtake total	649.032,140	12.075.240.495,03	18,605
	②	Other offtake at 0.4 kV total	179.724,180	3.774.672.564,66	21,003
	③	Public lighting total	30.256,690	444.588.733,79	14,694
	④	ALL GROUPS TOTAL of which:	859.013,010	16.294.501.793,48	18,969
	⑤	- Access to the network	859.013,010	8.798.172.033,55	10,242
	⑥	- Energy (4-5)	859.013,010	7.496.329.759,93	8,727
	⑦	PURCHASE total:	859.013,010	8.629.195.190,37	10,045
	⑧	Difference (6-7)		-1.132.865.430,44	

The number of tariff customers by offtake groups and the average consumption:

	OFFTAKE GROUP	NUMBER OF CUSTOMERS		Index	Consumption in kWh	Average consumption kWh/cust.
		Plan 2002	On 31. Dec. 2002			
①	Other offtake at 0.4 kV	17.243	17.128	99,33	179.724.180	10.493
②	Public lighting	1.826	1.850	101,31	30.256.690	16.355
③	Household offtake	176.886	177.007	100,07	649.032.140	3.667
④	Tariff customers total	195.955	195.985	100,02	859.013.010	4.392

OSKRBA ODJEMALCEV Z ELEKTRIČNO ENERGIJO

Struktura količinske realizacije prodaje tarifnim odjemalcem:



Upravičeni odjemalci

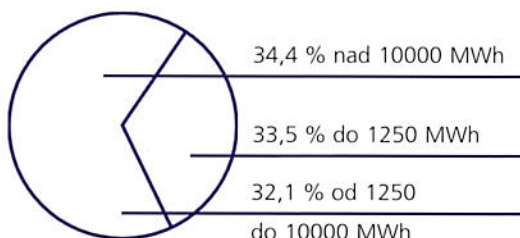
Oskrba upravičenih odjemalcev z električno energijo je energetska tržna dejavnost, ki deluje po tržnih zakonitostih in sledi zahtevam Energetskega zakona in odpiranju trga z električno energijo.

Elektro Maribor, d.d., je v okviru danih možnosti, ki so jih krojili tako zunanji kot notranji dejavniki, uspešno prebrodil začetno obdobje in postal nedvomno eden vodilnih ponudnikov tovrstnega blaga in storitev. Uspeli smo utrditi tržni položaj, ki smo ga podedovali iz popolnoma reguliranega obdobja in v nekaterih segmentih celo izboljšali. Pred nami je naslednja faza, v kateri se bomo morali spopasti tudi s tujo, bolj izkušeno konkurenco in najti tiste segmente trga, ki bodo zagotavljali nadaljnji razvoj tržne dejavnosti v družbi. Glede na pridobljeno znanje, izkušnje, vlaganja v razvoj za trženje pomembne infrastrukture in prizadevnost sodelavcev lahko zaenkrat optimistično zremo v prihodnost.

Skupno število odjemalcev, ki smo jim dobavljali električno energijo, je 939. Ti odjemalci imajo skupaj 1417 odjemnih mest. V letu 2002 smo jim prodali 932.542 MWh električne energije.

Glede na plan smo dosegli 7,1% povečanje prodaje glede na skupno količino prodanih enot električne energije (kWh) in 7,3% vrednostno povečanje prodaje glede na ustvarjene prihodke iz naslova prodaje električne energije upravičenim odjemalcem.

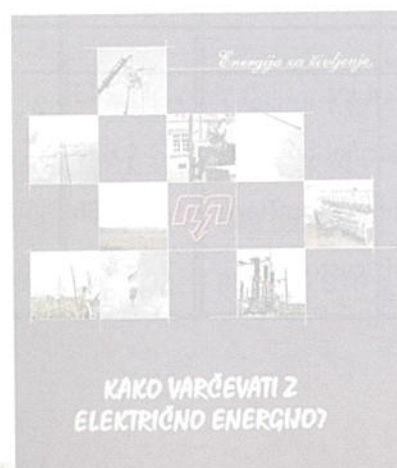
Struktura prodaje električne energije po skupinah:



Na podlagi obdelave statističnih podatkov Ministrstva za okolje, prostor in energijo dosegamo z oskrbo električne energije upravičenih odjemalcev, glede na količino prodane električne energije, 19% tržni delež, z oskrbo celotne skupine odjemalcev Elektro Maribor, pa 25% tržni delež v Republiki Sloveniji. Iz prihodkovnega (vrednostnega) vidika je tržni delež upravičenih odjemalcev 19%, celotne skupine odjemalcev Elektro Maribor pa 20%.

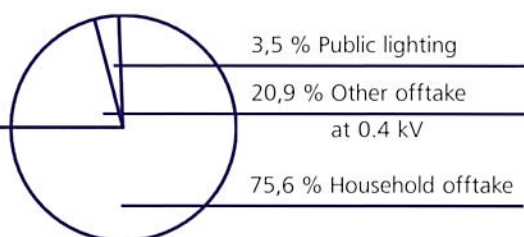
Ponudbeni oz. prodajni portfelj predstavljajo produkti električne energije (VT, MT, enotna cena, pas in ostala energija), ki smo jih ob koncu leta opremili s prvimi značilnostmi blagovne znamke Energija za življenje.

Za upravičene odjemalce električne energije smo razvili brezplačno storitev (simulacija obračuna), ki nam je bila v pomoč pri sklepanju pogodb za dobavo električne energije. Na podlagi cenika in karakteristike odjema posameznega merilnega mesta smo pripravili simulacije obračunov po posameznih mesecih, s čimer smo odjemalcu predstavili povprečno ceno na enoto električne energije, ki bi jo dosegal ob danem ceniku in porabi.

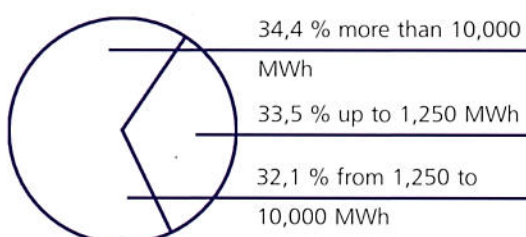


ELECTRICAL ENERGY SUPPLY TO CUSTOMERS

Quantity sales to tariff customers:



Sale of electrical energy by groups:



Eligible Customers

Supplying electrical energy to eligible customers is an energy-related market activity which abides by market rules and is in line with the Energy Act and liberalisation of the electrical energy market.

Within the given opportunities, created by both internal and external factors, Elektro Maribor d.d. successfully sailed through the initial stage and undoubtedly became one of the leading suppliers of this type of goods and services. The Company managed to consolidate its market position, inherited from the time of complete regulation and advance it in some segments. Now the Company faces the next stage of dealing with foreign, more experienced competition and find those segments of the market, which will provide further development of market-related activities of the Company. Given the acquired knowledge and experience, investments in developing infrastructure crucial for marketing and the efforts of our staff, we may look optimistically at the future.

The total number of customers to which the Company supplied electrical energy was 939, they had a total of 1,417 offtake points. In 2002, the Company sold 932,542 MWh of electrical energy to these customers.

The plan for sale of total quantity of electrical energy units (kWh) was exceeded by 7.1% and the plan for income made from sale of electrical energy to eligible customers by 7.3%.

Pursuant to the statistical data of the Ministry of the Environment, Spatial Planning and Energy, the Company's quantity sales of electrical energy to eligible customers gives it 19% market share. If all customers of Elektro Maribor are taken into account, the Company's market share in Slovenia will amount to 25%. The income earned from eligible and all customers gives Elektro Maribor market shares of 19% and 20% respectively.

The Company's offer, i.e. sales range, includes electrical energy products (HT, MT, unified price, band and other energy), which was at the end of 2002 equipped with the first characteristics of the trademark Energy for Life.

A free service (invoice simulation) was offered to eligible customers, which helped the Company in concluding contracts on supplying electrical energy. On the basis of the set price list and the offtake characteristics of the individual measurement point, we prepared invoice simulations by individual months which presented the customer with the average price per electrical energy unit that would be charged for given consumption pursuant to the applicable price list.



OSKRBA ODJEMALCEV Z ELEKTRIČNO ENERGIJO

TRŽNO KOMUNICIRANJE

S pričetkom odpiranja trga z električno energijo smo v podjetju sistematično pristopili h komuniciranju z našimi ciljnim javnostmi z namenom informiranja, svetovanja in razvijanja partnerskih odnosov. To nam omogoča dolgoročno sodelovanje, ki temelji na medsebojnem zaupanju in spoštovanju, stalnem komuniciranju, izmenjavi informacij in obojestranski odgovornosti.

Glede na ciljno javnost smo izbrali ustrezne načine komuniciranja, predstavljene v nadaljevanju.

Informiranje tarifnih odjemalcev poteka v okviru delovnega procesa povsod, kjer naši delavci prihajajo v stik z njimi in kadar le-ti to želijo. Seveda pa imamo za informiranje organizirano posebno službo z informacijskimi pisarnami na območnih enotah ter informacijski in klicni center na upravi družbe.

Zadostili smo tudi določilu 31. člena Uredbe o načinu izvajanja gospodarskih javnih služb s področja distribucije električne energije, ki določa, da moramo najmanj enkrat letno informirati posameznega tarifnega odjemalca o gibanju in značilnostih porabe električne energije značilnih skupin tarifnih odjemalcev. Navedeno smo opravili v decembru 2002 z ustreznim pisnim obvestilom vsem gospodinjstvom.

Pri upravičenih odjemalcih dajemo večji poudarek neposrednemu komuniciranju, saj ponujamo izdelek, ki ima posebne lastnosti. Prav tako želimo ponudbo čim bolj približati odjemalcem ter jo prilagoditi potrebam in zahtevam posameznih odjemalcev.

V letu 2002 smo uspešno organizirali predavanja za upravičene odjemalce na sedežu družbe in na območnih enotah. Informirali smo jih o energetskega trgu in sklepanju pogodb za dobavo električne energije ter odgovarjali na vprašanja.

Na podlagi rezultatov ankete ugotavljamo, da je večina odjemalcev z oskrbo električne energije zadovoljna. Želijo pa si več svetovanja za učinkovito rabo energije (predvsem manjši upravičeni odjemalci).

Naša osnovna cilja sta širitev kroga zadovoljnih, ustrezno informiranih odjemalcev in krepitev ugleda družbe kot celote v ožjem in širšem družbenem okolju. V ta namen smo v prvem letu uvajanja novih marketinških konceptov uporabili različne komunikacijske poti - spletne strani, oglasna sporočila, predavanja, poslovna poročila, tiskane materiale (zloženke), plakate in sodelovali na različnih prireditvah (npr. sejem Energetika in vzdrževanje), ki so povezane z našimi vsebinami poslovanja.



ELECTRICAL ENERGY SUPPLY TO CUSTOMERS

MARKETING COMMUNICATIONS

With the beginning of liberalisation of the electrical energy market, the Company systematically began to communicate with target public for the purpose of informing, consulting, developing partnership, which enables long-term co-operation based on mutual trust and respect, constant communication and exchange of information and mutual responsibility.

Appropriate means of communication were chosen with regard to the target public in question.

Informing tariff customers is a part of the work process wherever the Company's staff enters into contact with these customers and if the customers express the need for such communication. Naturally, a specialised service is organised with offices at the local units and the information and call centre at the Company's head office.

The Company also complied with Article 31 of the Decree on the Method for the Implementation of Public Service Obligation in the Field of Electricity Distribution stipulating that the Company shall at least once a year inform the individual tariff customer on trends and features of electrical energy consumption by characteristic groups of tariff customers. This was carried out in December 2002 by sending the appropriate information in writing to all households.

With eligible customers, the emphasis is on direct communication, because the Company offers the product with specific characteristics. The aim is also to familiarise the customers with the Company's offer and to adjust to needs and requirements of individual customers.

In 2002, the Company successfully organised lectures for eligible customers at the Company's head office and at the local units. They were informed about the energy market and concluding contracts on supply of electrical energy and also received answers to their questions.

Results of the survey, which was carried out, show that the majority of eligible customers is satisfied. However, they would like more consulting with regard to efficient energy use (this is particularly true for smaller eligible customers).

The basic goal is to increase the number of satisfied, adequately informed customers and to strengthen the Company's reputation in local and national social environment. For that purpose the Company used a number of communication channels in the first year of introducing the new marketing concept - website, ads, lectures, business reports, printed materials (leaflets), posters and participation at various events (e.g. Energy and Maintenance Fair) related to the Company's activities.



DELOVANJE DISTRIBUCIJSKEGA ELEKTROENERGETSKEGA OMREŽJA Z VIDIKA KAKOVOSTI DOBAVE ELEKTRIČNE ENERGIJE

Upravljalca distribucijskega omrežja skrbi za zanesljivo in kvalitetno dobavo električne energije njenim porabnikom. To pomeni, da skrbi za varno in zanesljivo delovanje, za systemske zaščitne naprave in obratovalne meritve, da zagotavlja dostop do omrežja ter skrbi za restavracijo sistema po motnjah delovanja telekomunikacijskega omrežja in naprav oziroma prenosa podatkov.

Obratovanje se odvija na območju severovzhodne Slovenije, ki obsega 3.992 km².

Fizični obseg postrojev in omrežij na dan 31. 12. 2002 je bil naslednji:

Po tem omrežju smo v letu 2002 dobavili 1.760.191 MWh električne energije več kot 196.000 odjemalcem. Cene za uporabo distribucijskega omrežja določa Agencija za energijo Republike Slovenije po sistemu poštna znamka, ki je enoten za celotni distribucijski sistem v Republiki Sloveniji.

S spremljanjem kriterijev kakovosti dobave električne energije ugotavljamo, da je število odjemalcev na nizkonapetostnem omrežju s slabimi napetostnimi razmerami vedno manjše. V letu 2001 je imelo slabe napetostne razmere 18,99 % odjemalcev, v letu 2002 pa samo 14,88 % (merjeno po standardu SIST EN 50160). Prav tako smo skrajšali čas restavracije omrežja po motnji.

Povprečna konična obtežba 291,90 MW je bila v primerjavi z letom 2001 večja za 3 %.

Glede na vedno ostrejšo zahtevo po večji zanesljivosti in kakovosti dobave električne energije, občutljivosti odjemalcev oziroma njihove tehnologije, sledimo novim tehnologijam na področju tehnološke opreme distribucijskih centrov vodenja (DCV), uvajanja daljinskega vodenja SN omrežij in avtomatizacije. V ta namen smo v letu 2002 izvajali veliko aktivnosti na področju investiranja v novi DCV, klicni center, naprave daljinskega vodenja, obnovo 110 kV stikališč in drugo.



20

LETNO POROČILO 2002 ANNUAL REPORT

OBJEKT	FIZIČNI OBSEG
Razdelil. transf. postaja VN/SN	21 kom
Transformatorska postaja SN/NN	3083 kom
Daljnovid	
110 kV	165,3 km
35 kV	61,4 km
20 kV	2901,2 km
10 kV	40,5 km
SKUPAJ	3168,4 km
Kablovod	
35 kV	8,1 km
20 kV	333,0 km
10 kV	242,7 km
SKUPAJ	583,8 km
Omrežje 0,4 kV	
- prostovodno	7912,5 km
- kablovod	3687,2 km
SKUPAJ	11599,7 km

DISTRIBUTION NETWORK OPERATIONS WITH REGARD TO THE QUALITY OF ELECTRICAL ENERGY SUPPLY

The distribution network manager maintains safe and reliable operations, system protection facilities and operations' measurements, provides access to the network, restores the system after disruptions, maintains the operations of telecommunication network and facilities and data transfer, in short, maintains reliable and quality supply of electrical energy to users.

The Company operates in north-eastern Slovenia, in the area of 3,992 km².

The physical volume of installations and networks as at 31 December 2002 was as follows:

FACILITY	PHYSICAL VOLUME
Distribution transformer HV/MV	21 units
Transformer MV/LV	3,083 units
Transmission line	
110 kV	165.3 km
35 kV	61.4 km
20 kV	2901.2 km
10 kV	40.5 km
TOTAL	3168.4 km
Cable line	
35 kV	8.1 km
20 kV	333.0 km
10 kV	242.7 km
TOTAL	583.8 km
Network 0.4 kV	
- overhead	7912.5 km
- cable line	3687.2 km
TOTAL	11599.7 km

In 2002, the Company supplied 1,760,191 MWh of electrical energy to more than 196,000 customers through this network. The price for the use of distribution network is set by the Energy Agency of the Republic of Slovenia by using of the postmark system, which is uniform for the whole distribution system in the Republic of Slovenia.

The monitoring of quality criteria of electrical energy supply shows that the number of customers on the low voltage network who have weak voltage conditions is constantly decreasing. In 2001, 18.99% of customers had weak voltage conditions, whilst in 2002 this proportion reduced to only 14.88% (measured in accordance with the SIST EN 50160 standard). The time of restoring the network after disruptions was also shortened.

The average conical weight of 291.90 MW increased by 3% compared to 2001.

Due to constant rise in demand for increased reliability and quality of electrical energy supply and the sensitivity of customers and their technology, the Company has been following new technologies in the field of technological equipment of distribution control centres (DCC), the introduction of remote control of MV networks and automation. For that purpose numerous activities were carried out; the investment in the new DCC, call centre, remote control installations, reconstruction of 110 kV junctures and other.



NOVI DISTRIBUCIJSKI CENTER VODENJA

Zelo pomembna pridobitev za Elektro Maribor, d.d., ki bo veliko prispevala tudi h kvalitetni in zanesljivi oskrbi naših odjemalcev, je pričetek delovanja novega sodobnega distribucijskega centra vodenja (DCV), ki pomeni uveljavljanje novih tehnologij in spoznanj na področju tehnološke opreme distribucijskih centrov vodenja srednjenapetostnih omrežij.

DCV Elektro Maribor zajema več kot 30.000 podatkovnih točk, ki jih opisuje preko 300.000 podatkov. Relacijska baza podatkov zajema celotno 110 kV, 20 kV in 10 kV omrežje. Trenutno daljinsko vodimo 22 elektroenergetskih objektov in 45 daljinsko vodenih ločilnih mest v srednje napetostnem omrežju.

Programska oprema DCV je razdeljena na dva funkcionalna sklopa:

- SCADA je uveljavljeno ime za programe, ki predstavljajo jedro centra vodenja ali nadzovanja in vodenja. Omogoča, da je operater preko slik, alarmov in sporočil na ekranu v vsakem trenutku seznanjen z dogajanjem v procesu in ga lahko temu

primerno optimira;

- DMS nudi podrobne analize, optimizacijo in kompleksne tehnične izračune za optimiranje delovanja elektroenergetskega omrežja.

Strojna oprema ima več sklopov:

- APLIKACIJSKI STREŽNIK omogoča zanesljivost obratovanja celotnega centra, razpolaga z veliko količino podatkov in podpira DMS aplikacijo;

- STREŽNIK ASE (DAS) zajema podatke iz vseh daljinsko vodenih elementov, zagotavlja stabilnost sistema in večjo zanesljivost delovanja;

- SISTEMSKI STREŽNIK obdeluje podatke in podpira sistem SCADA;

- OSTALA PERIFERNA OPREMA podpira nemoteno komunikacijo, povezuje opremo v celoti in ščiti sistem pred morebitnimi zunanjimi vdori.



NEW DISTRIBUTION CONTROL CENTRE

The start of operations of the new modern distribution control centre (DCC) is an extremely important achievement of Elektro Maribor d.o.o., which will provide great help in quality and reliable supply of the Company's customers. The centre is implementing new technologies and knowledge about technological equipment of distribution control centres for medium voltage networks.

The DCC of Elektro Maribor includes more than 30,000 data points, described by more than 300,000 data. The relational database includes the entire 110 kV, 20 kV and 10 kV network. At the moment, 22 electrical energy facilities and 45 juncture points in the medium voltage network are remotely controlled.

The DCC's software is divided into two functional sets:

- SCADA is an established name for software, which represents the core of the control or monitoring and control centre. The software gives the operator real time access to activities in the process through visual mode, alarms and on-screen messages, which enables the operator to adequately optimise the process.
- DMS offers detailed analyses, optimisation and complex technical calculations required to optimise the operations of the electrical energy network.

Hardware has several sets:

- APPLICATION SERVER provides the reliability of operations of the entire centre, it holds large quantity of data and supports the DMS application.
- ASE SERVER (DAS) collects data from all remotely controlled elements, provides system stability and increases reliability of operations.
- SYSTEM SERVER processes data and supports the SCADA system.
- OTHER PERIPHERAL EQUIPMENT supports uninterrupted communications, integrates the hardware and protects the system from any external intrusions.

VLAGANJE V RAZVOJ DISTRIBUCIJSKEGA ELEKTROENERGETSKEGA OMREŽJA

V letu 2002 smo v elektroenergetsko omrežje investirali 3,074 mia SIT. Od tega:

Vrsta objekta	v 000 SIT	%
Objekti 110 kV	658.501	21,4
Objekti SN in NN	1.387.187	45,1
Zamenjava SN stikal, TMT, meritve, AKU baterij, UPS in usmernikov	123.876	4,0
Telekomunikacijske zveze in informatika	235.031	7,7
Oprema, poslovni prostori	605.083	19,7
Dokumentacija	64.340	2,1
Skupaj	3.074.018	100,0

V letu 2002 smo zaključili z investicijo tehnološko najzahtevnejšega objekta - distribucijskega centra vodenja (DCV). Po opravljenih funkcionalnih preizkusih in tehničnem pregledu smo pričeli s poskusnim obratovanjem.

Nadaljevali smo z izgradnjo RTP 110/20 kV Rače, ki bo zaključena v letu 2003.

Nadaljevali smo z drugo fazo zamenjave zastarele primarne in sekundarne opreme v stikališču 110 kV v RTP 110/20 kV Ljutomer. V RTP 110/20 kV Ptuj pa smo pričeli s prvo fazo zamenjave zastarele primarne in sekundarne opreme v stikališču 110 kV.

V RTP 110/10 kV Melje smo začeli z gradnjo nadomestne RTP. Iz RTP 110/10 kV Melje, ki je ena od najstarejših RTP na preskrbovalnem območju Elektro Maribora, napajamo cca. 40 % odjema na območju mesta Maribor in to pretežno industrijski del. Gradnjo bomo vršili v več fazah. V letu 2002 smo pridobili gradbeno dovoljenje in pričeli z gradbenimi deli ter izbrali dobavitelja opreme 110 kV v plinski (SF6) oklopljeni modularni izvedbi - GIS zunanji.

S stališča zanesljivosti, varnega obratovanja in razpoložljivosti elektroenergetskega sistema smo na 110 kV napetostnem nivoju:

- dobavili opremo in izvedli gradbena dela za transformatorski polji za transformatorja 110/20 kV v RTP 110/20 kV Ormož za TR II 110/20 kV in RTP 110/20-10 kV Dobrava za TR IV 110/20-10 kV

- zamenjali energetska transformatorja 110/20 kV, 31,5 MVA v RTP 110/20 kV Radenci in RTP 110/20 kV Lendava

- zamenjali dotrajane odklopnike 110 kV v RTP Sl. Bistrica, RTP Tezno in RTP Radvanje

- dobavili naprave za daljinsko vodenje (RTU) za RTP Mačkovci

Nadaljevali smo tudi z načrtovanimi ureditvami meritev na prevzemno-predajnih mestih, ki nam bodo omogočala učinkovito nadziranje izmerjene dobavljene električne energije (montaža merilnih omar, dobava in vgradnja kombiniranih merilnih transformatorjev 110 kV).

Za našteje investicije smo porabili cca. 25 % sredstev celotnega plana.

Največ sredstev (cca. 45 % sredstev celotnega plana) pa smo namenili za novogradnje, rekonstrukcije, obnove elektroenergetskih objektov in naprav na sredjenapetostnem in nizkonapetostnem nivoju: za izgradnjo transformatorskih postaj 20 (10)/0,4 kV, daljnovodov in kablovodov 20 (10) kV, nizkonapetostnih omrežij 230/400 V, s pripadajočimi rekonstrukcijami. Z vlaganji v omenjene objekte neposredno izboljšujemo slabe napetostne razmere pri odjemalcih, pokrivamo potrebe povečanega odjema električne energije, zagotavljamo varno obratovanje ter z naložbami v avtomatizacijo sredjenapetostnega omrežja zmanjšujemo trajanje prekinitev zaradi trajnih okvar v omrežju.

Pridobivanje investicijsko projektne dokumentacije je zaključeno oziroma poteka za naslednje objekte: DV 2 x 110 kV Murska Sobota - Mačkovci, DV 110 kV Murska Sobota - Lendava, DV 110 kV Lenart - Radenci, RTP 110/10 (20) kV Koroška vrata, KBV 110 kV Pekre - Koroška vrata - Melje, RTP 110/20 kV Murska Sobota - zamenjava primarne in sekundarne opreme v stikališču 110 kV, RTP 110/20 kV Lenart-DV polje Radenci, RTP 110/20 kV Radenci - DV polje Lenart, RTP 110/20 kV Lendava - DV polje Murska Sobota.

INVESTMENTS IN THE DEVELOPMENT OF ELECTRICAL ENERGY DISTRIBUTION NETWORK

In 2002, the Company invested SIT 3,074 million in the electrical energy network, as follows:

Type of installation:	In 000 of SIT	%
110 kV installations	658,501	21.4
MV and LV installations	1,387,187	45.1
Replacing MV switches, TMT, measurements, AKU batteries, UPS and routers	123,876	4.0
Telecommunications and informatics	235,031	7.7
Equipment, business premises	605,083	19.7
Documentation	64,340	2.1
Total	3,074,018	100.0

In 2002, the Company completed the most technologically demanding installation - the distribution control centre (DCC). After functionality tests and technical examination were carried out, the centre began with field tests. The construction of DTS 110/20 kV Rače continued and the investment will be completed in 2003.

The Company continued the second stage of replacing obsolete primary and secondary equipment in the 110 kV juncture of 110/20 kV DTS Ljutomer and began with the first stage of replacing obsolete primary and secondary equipment in the 110 kV juncture of 110/20 kV DTS Ptuj.

In 110/10 kV DTS Melje the Company started the construction of a replacement DTS. The 110/10 kV DTS Melje, which is one of the oldest DTSs in the supply area of Elektro Maribor, supplies approximately 40% of offtake in Maribor city, mostly its industrial part. The construction will be carried out in several stages. In 2002, the Company acquired the building permit, started the construction work and selected the supplier of equipment - 110 kV in gas (SF6) strengthened modular design - external GIS. With a view to reliability, safe operations and the availability of electrical energy system, the Company carried out the following at the 110 kV voltage level:

- Supplied equipment and carried out construction work for transformer fields for 110/20 kV transformers in 110/20 kV DTS Ormož for TR II 110/20 kV and 110/20-10 kV DTS Dobrava for TR IV 110/20-10 kV;
- Replaced 110/20 kV energy transformers, 31.5 MVA in 110/20 kV DTS Radenci and 110/20 kV DTS Lendava;
- Replaced worn out 110 kV circuit breakers in DTS Slovenska Bistrica, DTS Tezno and DTS Radvanje.
- Supplied equipment for remote control (RTU) for DTS Mačkovci.

The company also continued to introduce the planned measurement system at the intake - offtake points, which will enable efficient control of measured electrical energy supply (assembly of measurement cabinets and supply and build-in of 110 kV combined measure transformers).

The abovementioned investments required approx. 25% of the planned funds total.

The largest part of funds (approx. 45% of the planned funds total) was allocated to new constructions, reconstructions and modernisation of electrical energy facilities and installations of middle voltage and low voltage level: for construction of 20(10)/0,4 kV transformer stations, 20(10) kV transmission and cable lines, 230/400 V low voltage networks and appertaining reconstructions. Investments in the abovementioned facilities directly improve weak voltage conditions of customers, cover the needs of increased offtake of electrical energy, provide safe operations and investments in automation of middle voltage network shortens the interruptions which are the result of continual breakdowns of the network.

Acquiring investment project documentation is completed or underway for the following facilities: 2 x 110 kV transmission line Murska Sobota - Mačkovci, 110 kV transmission line Murska Sobota - Lendava, 110 kV transmission line Lenart - Radenci, 110/10(20) kV DTS Koroška vrata, 110 kV cable line Pekre - Koroška vrata - Melje, 110/20 kV DTS Murska Sobota - replacing primary and secondary equipment at 110 kV juncture, 110/20 kV DTS Lenart-transmission line field Radenci, 110/20 kV DTS Radenci - transmission line field Lenart, 110/20 kV DTS Lendava - transmission line field Murska Sobota.

STORITVENE DEJAVNOSTI

V sektorju storitev smo v letu 2002 na območju Elektro Maribor opravljali naslednje dejavnosti:

- izgradnja NN kablovodov
- izgradnja SN daljnovodov
- izgradnja in vključevanje novih transformatorskih postaj 20 kV in 10 kV
- rekonstrukcije SN in NN omrežij
- projektiranje elektroenergetskih objektov za potrebe distribucije in tujih naročnikov
- proizvodnja elektrokovinske opreme za distribucijo in tuje naročnike (NN plošče, kovinske konstrukcije itd.)
- servisiranje, umerjanje in žigosanje električnih merilnih naprav
- izvajanje del na javni razsvetljavi
- izvajanje investicijskega inženiringa

Dela za lastno družbo Elektro Maribor, d.d., smo izvajali skladno s sprejetim letnim planom investicij v družbi. Nadzor nad izvajanjem del je potekal skladno z Zakonom o graditvi objektov pri čemer so izvajanje del nadzirali in ovrednotili imenovani predstavniki območnih enot distribucije in družbe Elektro Maribor, d.d.

Pri tem so nam pomožna in gradbena dela opravili kooperanti, ki so bili izbrani v skladu z Zakonom o javnih naročilih.

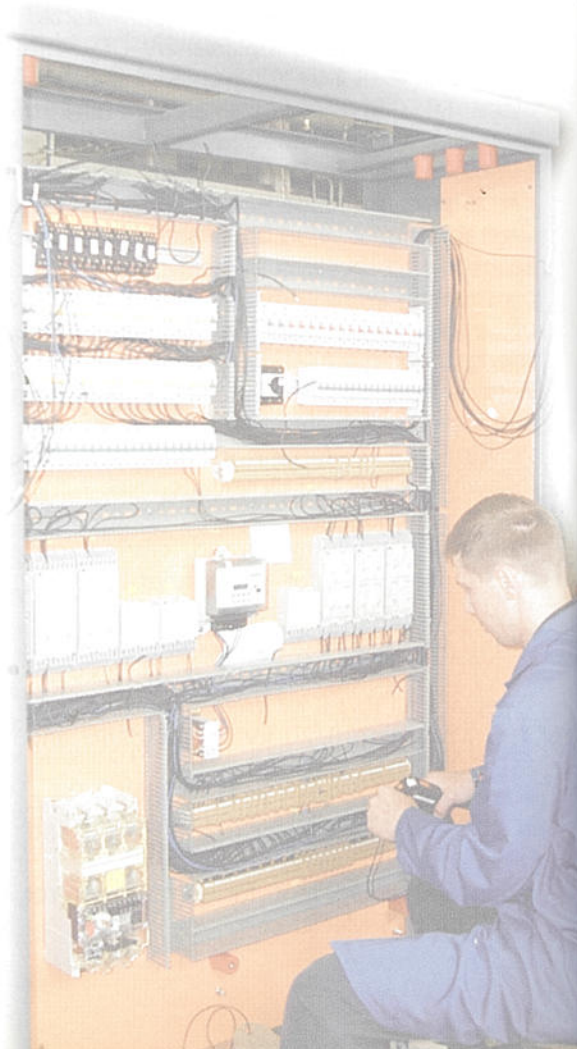
V obračunih opravljenih del so bile upoštevane cene iz obstoječega cenika storitev v Elektro Maribor, d.d. Za tuje naročnike, tj. naročnike izven distribucije, smo opravili 8 % vseh naših naročil. Dela smo pridobivali po klasičnem principu ponudbe na tržišču.

V letu 2002 smo učinkovito opravili 208.897 izdelavnih ur. Istočasno smo v sektorju storitev opravili za tuje naročnike še 69.781 izdelavnih ur.

V sektorju storitev je zaposlenih 220 delavcev, od tega 190 v storitvenih enotah in 30 na območnih enotah distribucije.

V sektorju storitev je slaba polovica delavcev kvalificiranih (95). Odstopanja navzgor in navzdol pa so pri drugi polovici enakovredna. Nekvalificiranih delavcev je 36.

Delavci v storitvenih enotah opravljajo dela na terenu. Zaradi težkega fizičnega dela so izpostavljeni raznim boleznim in poškodbam. Posledica tega so številni delovni invalidi.



SERVICES

The service department of Elektro Maribor performed the following activities in 2002:

- construction of low voltage cable lines,
- construction of middle voltage transmission lines,
- construction and connection of new 20 kV and 10 kV transformers,
- reconstruction of middle and low voltage networks,
- designing electrical energy facilities for distribution and other principals,
- production of electro metal equipment for distribution and other principals (low voltage plates, metal constructions, etc.),
- maintenance, calibration and certification of electro measuring equipment,
- carrying out work on public lighting,
- investment engineering.

Work for the mother company Elektro Maribor d.d. was carried out pursuant to the adopted annual investment plan of the Company. Supervision of work was carried out pursuant to the Construction Act. The work was supervised and evaluated by appointed representatives of local distribution units and the company Elektro Maribor d.d.

Ancillary and construction work was carried out by sub-contractors, selected pursuant to the Public Procurement Act.

Invoicing of carried out work was made in accordance with the applicable services price list of Elektro Maribor d.d. Eight percent of all work was carried out for other principals, i.e. principals other than distribution. Contracts were won on the market.

In 2002, 208,897 effective work hours were carried out. At the same time the services department carried out additional 69,781 work hours for other principals.

The service department employs 220 people, of which 190 in service units and 30 in local distribution units.

Roughly half of employees of the service department is qualified (95). Lower and higher education level is distributed roughly evenly in other employees. There are 36 unskilled workers.

The service department's employees carry out their work on the field. Due to hard physical labour, they are exposed to various diseases and injuries. The consequence thereof is numerous disabled workers.



ELEKTRO MARIBOR d.d. USTANOVIL HČERINSKO PODJETJE

Proizvodnja električne energije je v energetske zakonodaji opredeljena kot tržna dejavnost, ki mora biti ločena od reguliranih dejavnosti. Ta zahteva in odločitev uprave Elektro Maribor, d.d., da ohrani in razširi obseg lastne proizvodnje, sta bili bistveni podlagi za razmislek o ustanovitvi podjetja za upravljanje, vzdrževanje in razvoj malih hidroelektrarn (MHE). Tako je uprava Elektro Maribor, d.d. sprejela odločitev, da ustanovi hčerinsko podjetje za MHE, pri čemer je svojo odločitev oprla na prej omenjene zakonske določbe ter analizo upravičenosti ustanovitve takšnega podjetja.

Hčerinsko podjetje je bilo ustanovljeno 2. aprila 2002, ko je bil opravljen vpis podjetja v sodni register pri Okrožnem sodišču v Mariboru pod imenom: Hidroelektrarne Elektro Maribor, proizvodnja elektrike, d.o.o., z osnovnim kapitalom 9.296.037,00 SIT.

Podjetje je začelo s samostojnim poslovanjem 1. julija 2002. MHE so v Oplotnici (Cezlak), Skomarju, Vitanju, Činžatu in Josipdolu. Skupna proizvodnja vseh elektrarn v povprečnem hidrološkem letu je okrog 9,0 milijonov kWh, kar je nekaj več kot 0,5 % letne prodaje električne energije Elektro Maribor, d.d.

Z ustanovitvijo podjetja so upoštewane določbe energetskega zakona o potrebnosti ločitve proizvodnje električne energije od reguliranih dejavnosti Elektro Maribor, d.d., hkrati pa se odpirajo bistveno širše možnosti za udeleževanje kratkoročnih ter strateških ciljev poslovanja in razvoja podjetja, in sicer:

- posodobitev in razširitev zmogljivosti obstoječih MHE
- zagotavljanje najboljših možnih rezultatov poslovanja podjetja, kot jih omogoča Uredba o pravilih za določitev cen in za odkup električne energije (Ul. RS, št. 25/02)
- povečevanje vrednosti podjetja z vlaganji v gradnjo novih ekonomsko zanimivih ter ekološko sprejemljivih MHE

- utrditev položaja in ugleda podjetja pri poslovnih partnerjih in okolju, v katerem obratujejo obstoječe in nove MHE ter na tej podlagi vzpostavljanje možnosti za morebitne nove strateške poslovne in kapitalske povezave, ki perspektivno vključujejo tudi vlaganja v ekološko naravnane investicijske projekte s področja obnovljivih virov energije, uporabe biomase, soproizvodnje ipd.



ELEKTRO MARIBOR d.d. FOUNDED A DAUGHTER COMPANY

The Energy Act specifies the production of electrical energy as a market-related activity, which must be separated from the regulated activities. This requirement and the determination of Elektro Maribor's management to maintain and expand own production, formed the basis for consideration on founding a company for management, maintenance and development of small hydro power plants (SHPP). The management of Elektro Maribor d.d. thus adopted the decision to establish a daughter company for SHPP. This decision was based on the aforementioned provisions of the law and feasibility study on establishing such a company.

The daughter company was founded on 2 April 2002 when the company was entered in the Companies Register at the Regional Court of Maribor under name: Hidroelektrarne Elektro Maribor, proizvodnja elektrike, d.o.o. (Hydro Power Plants Elektro Maribor, Electrical Energy Production Ltd.) and equity of SIT 9,296,037.00.

The company began to operate on 1 July 2002. SHPP are located in Oplotnica (Cezlak), Skomar, Vitanje, Činžat and Josipdol. The total production of all power plants in an average hydrological year is roughly 9.0 million kWh, which is slightly more than 0.5% of the annual sales of electrical energy of Elektro Maribor d.d.

By establishing the daughter company, Elektro Maribor complied with provisions of the Energy Act, specifying that the production of electrical energy must be separated from regulated activities of the Company. At the same time this significantly expands opportunities for implementation of short-term and strategic business and development goals of the Company, as follows:

- modernisation and increase of capacity of the existing SHPP,
- providing the best possible business results of the Company, as enabled by the Decree on the Rules for Determining Prices and Purchasing of Electricity from Qualified Electricity Producers (Official Gazette of the RS No. 25/02),
- increasing the value of the Company by investing in new economically viable and environmentally acceptable SHPP and
- consolidating position and reputation of the Company with its business partners and the environment in which existing and new SHPP operate and on that basis establishing possibilities for potential new strategic business and capital connections, which may in the future include investments in ecologically-oriented investment projects in the field of renewable energy sources, use of biomass, co-production, etc.



ZAPOSLENI

Ob koncu leta 2002 je bilo v podjetju Elektro Maribor, d.d., zaposlenih 909 delavcev, od tega 7 pripravnikov.

Število zaposlenih po posameznih dejavnostih je bilo ob koncu leta 2002 naslednje:

- Sektor upravljanja distribucijskega omrežja - 49 zaposlenih
- Sektor distribucije električne energije - 404 zaposlenih
- Sektor dobave električne energije tarifnim odjemalcem - 102 zaposlena
- Sektor trženja električne energije upravičnim odjemalcem - 10 zaposlenih
- Sektor storitev - 220 zaposlenih
- Strokovne službe - 124 zaposlenih.

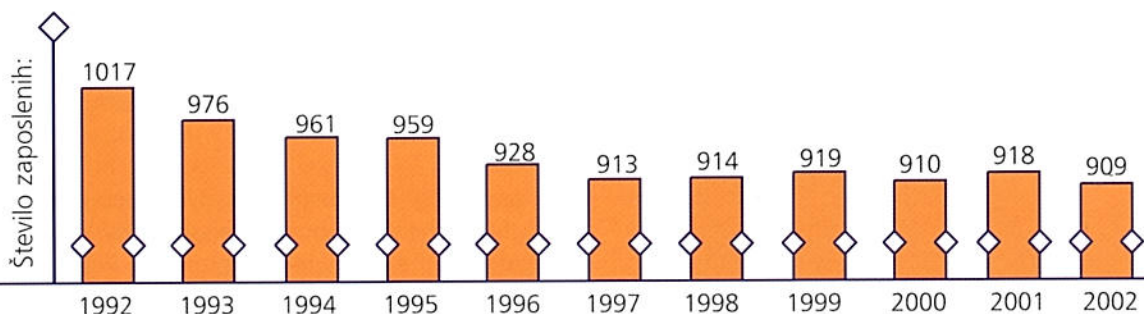
Izobrazbena struktura zaposlenih je bila naslednja:

STOPNJA IZOBRAZBE	Št. delavcev	Struktura (v %)
Magister znanosti	3	0,33
Visoka	78	8,58
Višja	91	10,01
Srednja	210	23,10
Visoko kvalificirani	121	13,31
Kvalificirani	299	32,89
Polkvalificirani	43	4,73
Nekvalificirani	64	7,04
SKUPAJ	909	100,00

30

LETNO POROČILO 2002 ANNUAL REPORT

Gibanje števila zaposlenih po letih:



EMPLOYEES

At the end of 2002, Elektro Maribor d.d. employed 909 people of which 7 trainees.

The number of employees by individual activities at the end of 2002 was as follows:

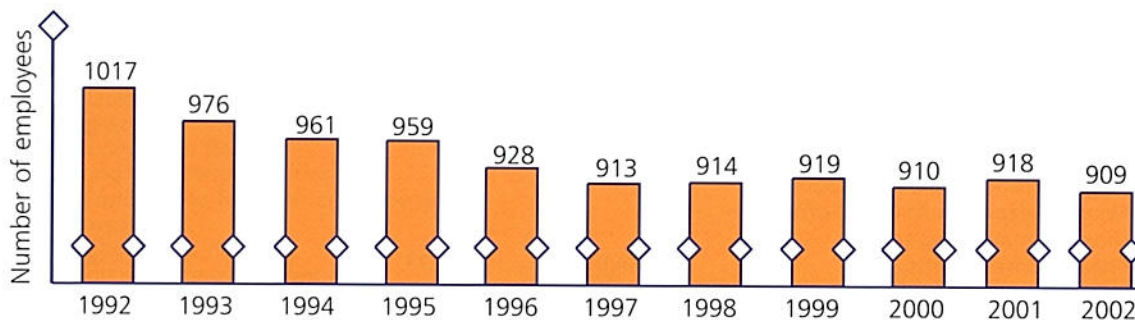
- Distribution Network Management Department - 49 employees;
- Electrical Energy Distribution Department - 404 employees;
- Electrical Energy Distribution to Tariff Customers Department - 102 employees;
- Electrical Energy Marketing to Eligible Customers Department - 10 employees;
- Service Department - 220 employees;
- Joint Technical Services - 124 employees.

Education structure of employees was as follows:

EDUCATION LEVEL	No. of employees	Share (in %)
Master of science	3	0,33
University degree	78	8,58
College degree	91	10,01
Secondary school	210	23,10
Highly skilled	121	13,31
Skilled	299	32,89
Semi-skilled	43	4,73
Unskilled	64	7,04
TOTAL	909	100,00

31

Number of employees - annual changes:



IZKAZ POSLOVNEGA IZIDA INCOME STATEMENT

	I - XII 2002		I - XII 2001	
	v 000 SIT in 000 SIT	v 000 EUR ¹ in 000 EUR ¹	v 000 SIT in 000 SIT	v 000 EUR ² in 000 EUR ²
Čisti prihodki od prodaje <i>Net sales revenues</i>	30,425,890	134,497	28,867,728	132,933
Vrednost usredstvenih lastnih proizvodov in storitev <i>Proper asset products or services value</i>	1,529,506	6,761	1,307,338	6,020
Drugi poslovni prihodki <i>Other operating revenues</i>	893,086	3,948	772,897	3,559
Stroški blaga, materiala in storitev <i>Goods, material and services costs</i>	26,391,809	116,664	23,950,753	110,291
Stroški dela <i>Labour costs</i>	3,819,299	16,883	3,277,657	15,093
Odpisi vrednosti <i>Write-offs</i>	4,093,259	18,094	23,264,060	107,129
- amortizacija <i>- Depreciation</i>	3,968,249	17,542	23,100,676	106,376
- prevrednotovalni poslovni odhodki pri obratnih sredstvih <i>- Revaluating operating expenses in current assets</i>	125,010	553	163,384	752
Drugi poslovni odhodki <i>Other operating expenses</i>	225,776	998	122,802	565
POSLOVNI IZID IZ POSLOVANJA OPERATING PROFIT/LOSS	-1,681,661	-7,434	-19,667,309	-90,566
Finančni prihodki iz deležev <i>Financial revenues from shares</i>	5	0	10,814	50
Finančni prihodki iz dolgoročnih terjatev <i>Financial revenues from long-term receivables</i>	39	0	163,867	755
Finančni prihodki iz kratkoročnih terjatev <i>Financial revenues from short-term receivables</i>	159,998	707	177,331	817
Finančni odhodki za odpise dolg. in kratk. finančnih naložb <i>Financial expenses for write-offs of short-term and long-term financial investments</i>	84,013	-371	99,124	456
Finančni odhodki za obresti in iz drugih obveznosti <i>Financial expenses for interest and from other liabilities</i>	74,763	330	65,809	303
ČISTI POSLOVNI IZID IZ REDNEGA DELOVANJA NET PROFIT/LOSS OF ORDINARY ACTIVITY	-1,680,395	-7,428	-19,480,230	-89,705
Izredni prihodki <i>Excess revenues</i>	106,133	469	681,684	3,139
Izredni odhodki <i>Extraordinary expenses</i>	11,493	51	644,513	2,968
Poslovni izid zunaj rednega delovanja Profit/loss of extraordinary activity	94,640	418	37,171	171
ČISTI POSLOVNI IZID OBRAČUNSKEGA OBDOBJA NET PROFIT/LOSS FOR THE PERIOD	-1,585,755	-7,010	-19,443,059	-89,533

¹ preračunano po srednjem tečaju sredine meseca BS v letu 2002 - 1 EUR = 226,22 SIT
calculated by the Bank of Slovenia mid-month mean price in 2001 - 1 EUR = 226,22 SIT

² preračunano po srednjem tečaju sredine meseca BS v letu 2001 - 1 EUR = 217,16 SIT
calculated by the Bank of Slovenia mid-month mean price in 2001 - 1 EUR = 217,16 SIT

BILANCA STANJA

BALANCE SHEET

	na dan 31. 12. 2002		na dan 31. 12. 2001	
	v 000 SIT in 000 SIT	v 000 EUR ¹ in 000 EUR ¹	v 000 SIT in 000 SIT	v 000 EUR ² in 000 EUR ²
SREDSTVA SKUPAJ (A+B+C)				
TOTAL ASSETS (A + B + C)	60,663,329	278,809	60,597,758	278,508
A. Stalna sredstva				
<i>Fixed assets</i>	54,460,703	236,508	55,100,245	248,861
B. Gibljava sredstva				
<i>Current assets</i>	6,196,127	26,908	5,491,398	24,802
- Zaloge				
- <i>Stocks</i>	595,844	2,588	506,789	2,289
- Poslovne terjatve				
- <i>Operating receivables</i>	4,012,029	17,423	3,896,391	17,598
- Kratkoročne finančne naložbe				
- <i>Short-term financial investments</i>	534,813	2,323	634,567	2,866
- Dobroimetje pri bankah, čeki, gotovina				
- <i>Bank balance, cheques and cash</i>	1,053,441	4,575	453,651	2,049
Aktivne časovne razmejitev				
<i>Prepaid expenses</i>	6,499	28	6,115	28
Zabilančna sredstva				
<i>Off-balance assets</i>	1,951,263	8,474	1,342,891	6,065
OBV. DO VIROV SREDSTEV (A + B + C)				
LIABILITIES (A + B + C)	60,663,329	263,444	60,597,758	273,690
A. Kapital				
<i>Capital</i>	51,502,719	223,662	53,083,216	239,751
- Vpoklicani kapital				
- <i>Called-up capital</i>	33,495,324	145,461	33,495,324	151,282
- Prevrednotovalni popravki kapitala				
- <i>Revaluating allowances for capital</i>	18,007,395	78,201	19,587,892	88,469
B. Rezervacije				
<i>Provisions</i>	2,482,098	10,779	2,963,757	13,386
C. Finančne in poslovne obveznosti				
<i>Financial and operating liabilities</i>	6,678,512	29,003	4,550,785	20,554
- Dolgoročne finančne in poslovne obveznosti				
- <i>Long-term financial and operating liabilities</i>	1,119,312	4,861	672,344	3,037
- Kratkoročne finančne in poslovne obveznosti				
- <i>Short-term financial and operating liabilities</i>	5,559,200	24,142	3,878,441	17,517
Zabilančne obveznosti				
<i>Off-balance liabilities</i>	1,951,263	8,474	1,342,891	6,065

¹ preračunano po srednjem tečaju BS 31.12.2002 - 1 EUR = 230,27
calculated by the Bank of Slovenia mean price on 12/31/2002 - 1 EUR = 230,27

² preračunano po srednjem tečaju BS 31.12.2001 - 1 EUR = 221,41 SIT
calculated by the Bank of Slovenia mean price on 12/31/2001 - 1 EUR = 221,41 SIT

Letno poročilo 2002 je revidirala revizijska hiša KPMG Slovenija d.o.o. Po njenem mnenju so računovodski izkazi s priložo resnična in poštena slika finančnega stanja gospodarske družbe na dan 31. 12. 2002, poslovnega izida in finančnega izida njenega poslovanja ter gibanja kapitala v tedaj končanem letu v skladu s slovenskimi računovodskimi standardi, ki jih je izdal Slovenski inštitut za revizijo.

The annual report for 2002 was audited by the audit company KPMG Slovenia d.o.o. and in its opinion the accounting records represent true and fair view of the Company's financial balance as at 31 December 2002, its profit/loss and capital movements in 2002 and are in accordance with the Slovene Accounting Standards issued by the Slovenian Institute of Auditors.

OBMOČNE IN STORITVENE ENOTE LOCAL AND SERVICE UNITS

OBMOČNE ENOTE / LOCAL UNITS:

OE MARIBOR OKOLICA / LU MARIBOR SURROUNDINGS

Veselova 6 ulica, tel./Telephone: + 386 2 22 00 400, fax: + 386 2 42 02 333

Vodja OE / Head of the LU: Herman Koser, inž. / Eng.

OE MARIBOR MESTO / LU MARIBOR CITY

Vodovodna ulica 2, tel./Telephone: + 386 2 22 00 300, fax: + 386 2 33 26 905

Vodja OE / Head of the LU: Mladen Žmavcar, univ. dipl. inž. / Univ.B.Sc.E.E.

OE SLOVENSKA BISTRICA / LU SLOVENSKA BISTRICA

Kolodvorska cesta 21a, tel./Telephone: + 386 2 84 32 500, fax: + 386 2 81 81 246

Vodja OE / Head of the LU: Alojz Mikolič, inž. / Eng.

OE GORNJA RADGONA / LU GORNJA RADGONA

Lackova ulica 4, tel./Telephone: + 386 2 56 48 800, fax: + 386 2 56 11 456

Vodja OE / Head of the LU: Ivan Štrakl, univ. dipl. ekon. / Univ.B.Sc.Econ.

OE MURSKA SOBOTA / LU MURSKA SOBOTA

Lendavska ulica 31, tel./Telephone: + 386 2 53 00 700, fax: + 386 2 53 21 870

Vodja OE / Head of the LU: Jože Turkl, univ. dipl. inž. / Univ.B.Sc.E.E.

OE PTUJ / LU PTUJ

Ormoška cesta 26a, tel./Telephone: + 386 2 74 80 600, fax: + 386 2 77 60 901

Vodja OE / Head of the LU: Jože Antonič, inž. / Eng.

STORITVENE ENOTE / SERVICE UNITS:

SE ELEKTRO GRADNJE MARIBOR / SU ELEKTROGRADNJE MARIBOR

Veselova ulica 11, tel./Telephone: + 386 2 22 00 400, fax: + 386 2 42 01 369

Vodje SE / Head of the SU: Janez Praprotnik, univ. dipl. inž. / Univ.B.Sc.E.E.

SE ELEKTRO GRADNJE LJUTOMER / SU ELEKTROGRADNJE LJUTOMER

Postružnikova ulica 3, tel./Telephone: + 386 2 58 48 850, fax: + 386 2 58 21 492

Vodja SE / Head of the SU: Andrej Sraka, univ. dipl. inž. / Univ.B.Sc.E.E.

SE ELEKTROREMONT MARIBOR / SU ELEKTROREMONT MARIBOR

Majcingerjeva ulica 23, tel./Telephone: + 386 2 22 00 400, fax: + 386 2 42 02 637

Vodja SE / Head of the SU: Janez Praprotnik, univ. dipl. inž. / Univ.B.Sc.E.E.

ELEKTRO MARIBOR, d.d. - LETNO POROČILO 2002

www.elektro-maribor.si

oblikovanje in priprava za tisk: grafopop, tisk: Tiskarna Petrič, prevod: Euro prevajalska agencija
naklada: 600 izvodov

